



THE VICTORIAN BAR INCORPORATED

MEMBERSHIP STATISTICS

Publication date: June 2023

CONTENTS

MEMBERSHIP STATISTICS

CONTENTS

1. Membership	3
2. Gender	4
3. Age & Seniority	6
4. Chambers	8
5. Clerks	9
6. Mediation Accreditations	11
7. Memberships	11
8. Bar Roll Divisions	12
9. Bar Council members	13

1. MEMBERSHIP

Figure 1-1 Members of The Victorian Bar from 2003 to 2023

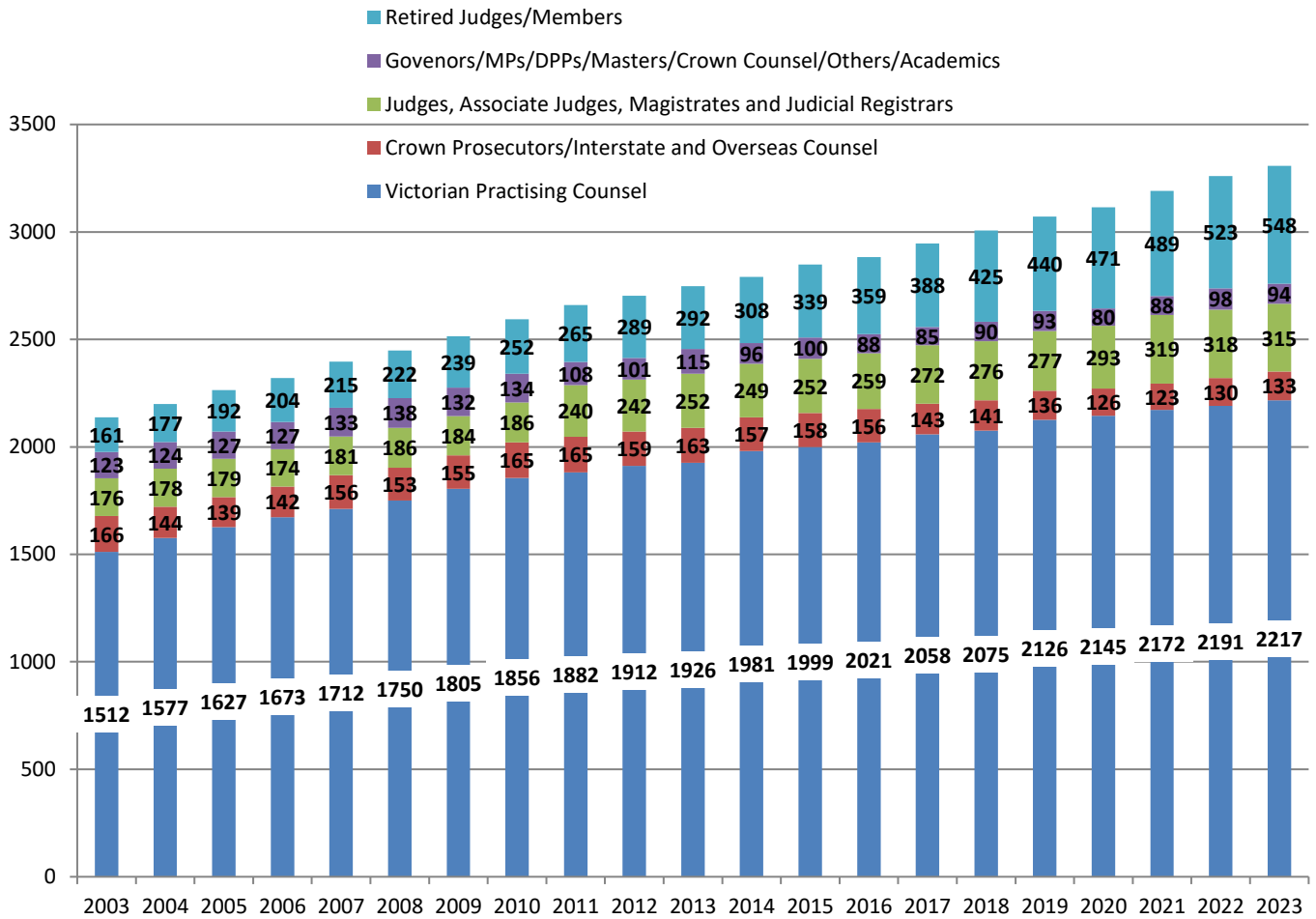
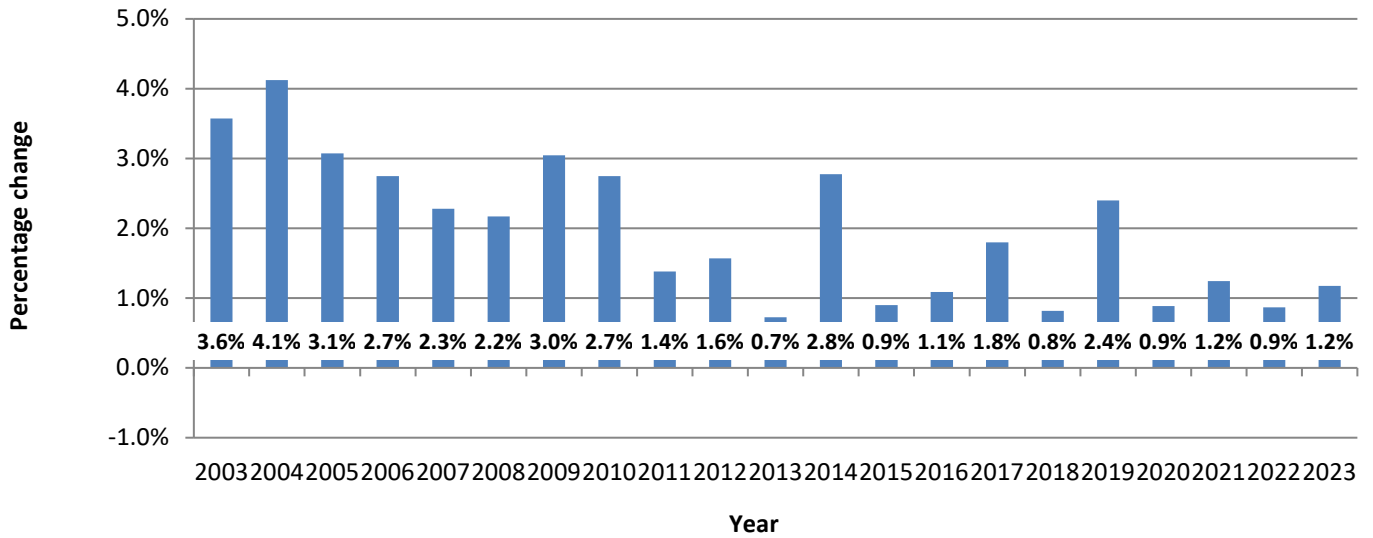


Figure 1-2 Percentage increase in Victorian Practising Counsel from 2003 to 2023



2. GENDER

Figure 2-1 Junior and senior Victorian Practising Counsel

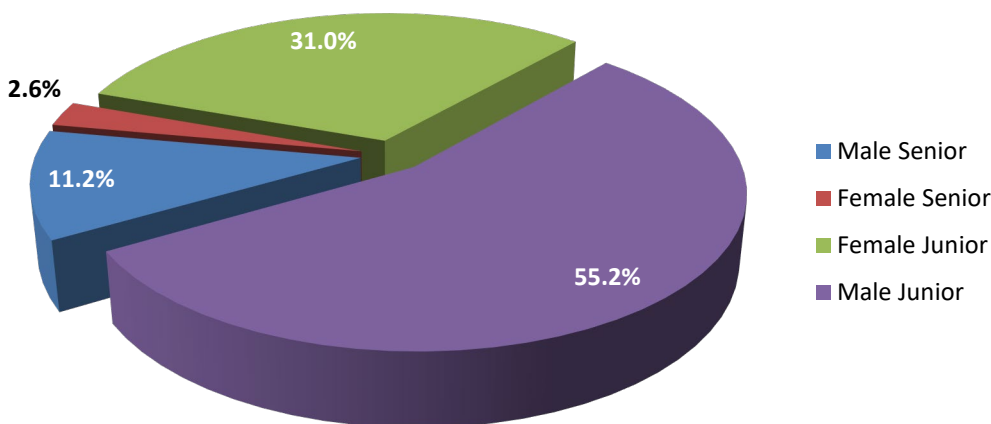


Figure 2-2 Victorian Practising Counsel from 2003 to 2023

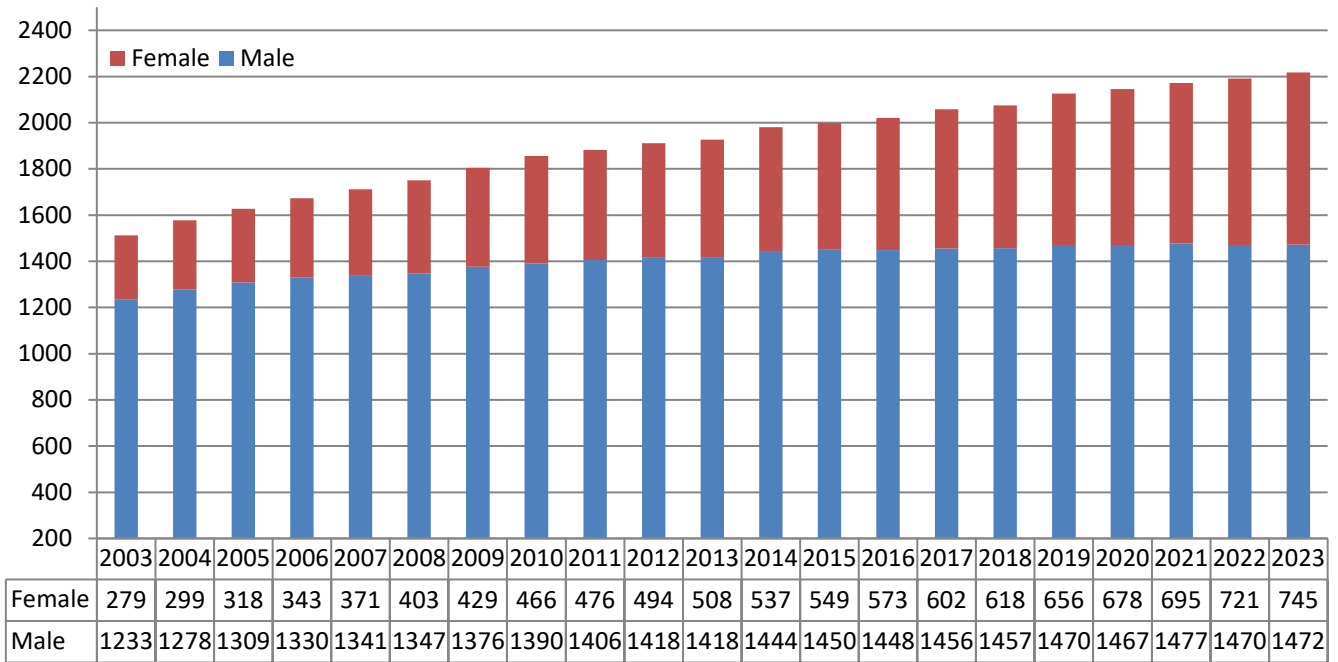
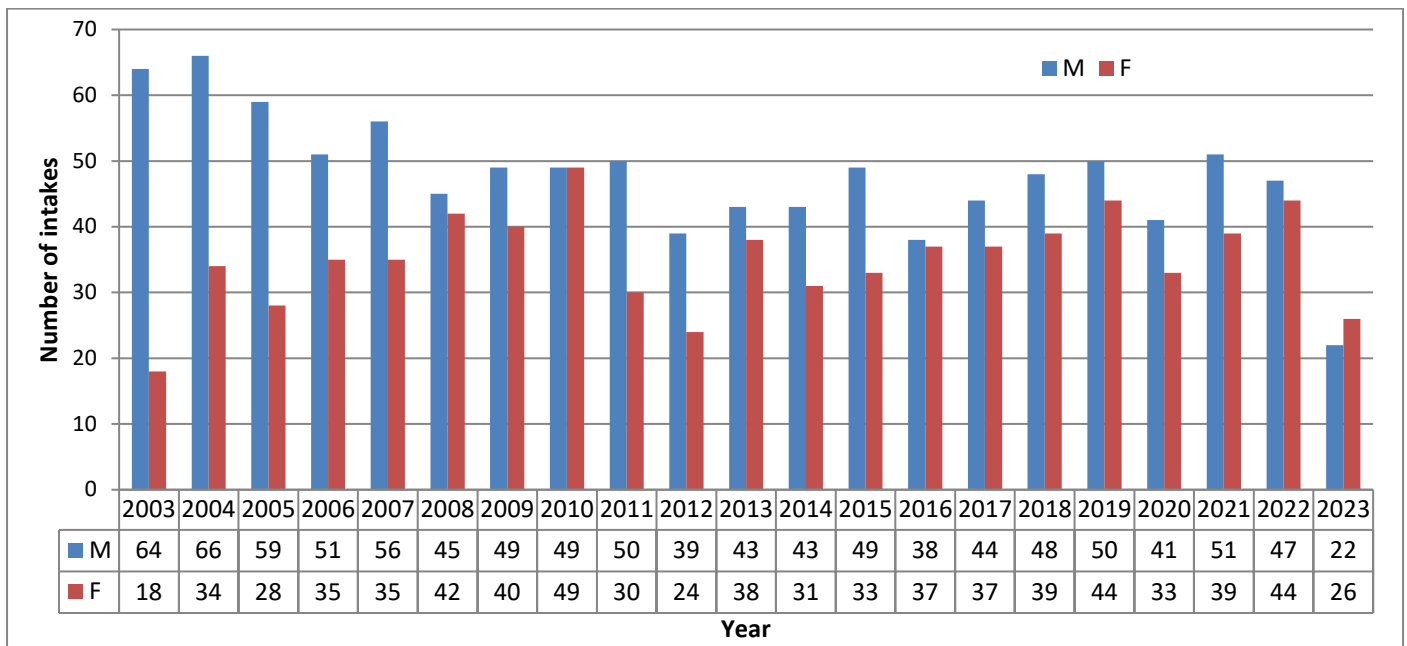


Figure 2-3 Readers Course intakes from 2003-2023



3. AGE & SENIORITY

Figure 3-1 Age of Victorian Practising Counsel when they first joined the Bar

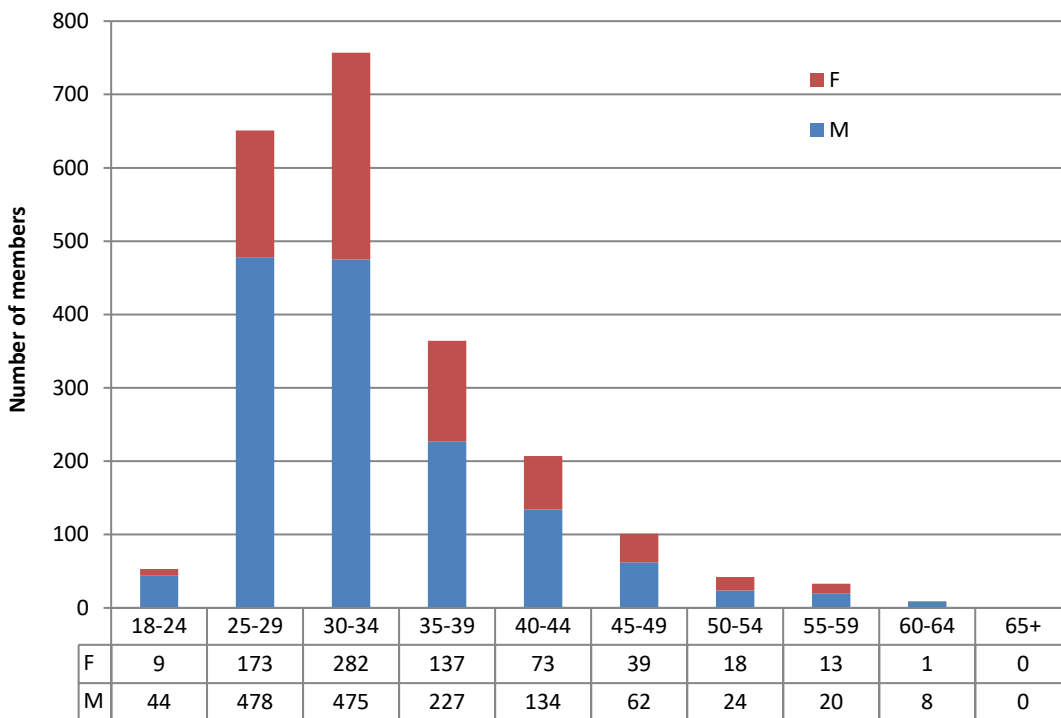


Figure 3-2 Current age of Victorian Practising Counsel

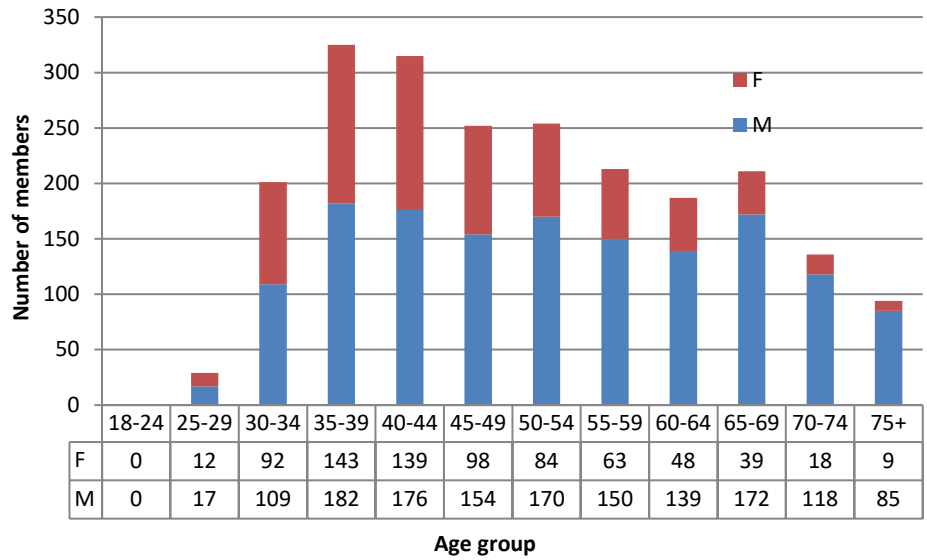
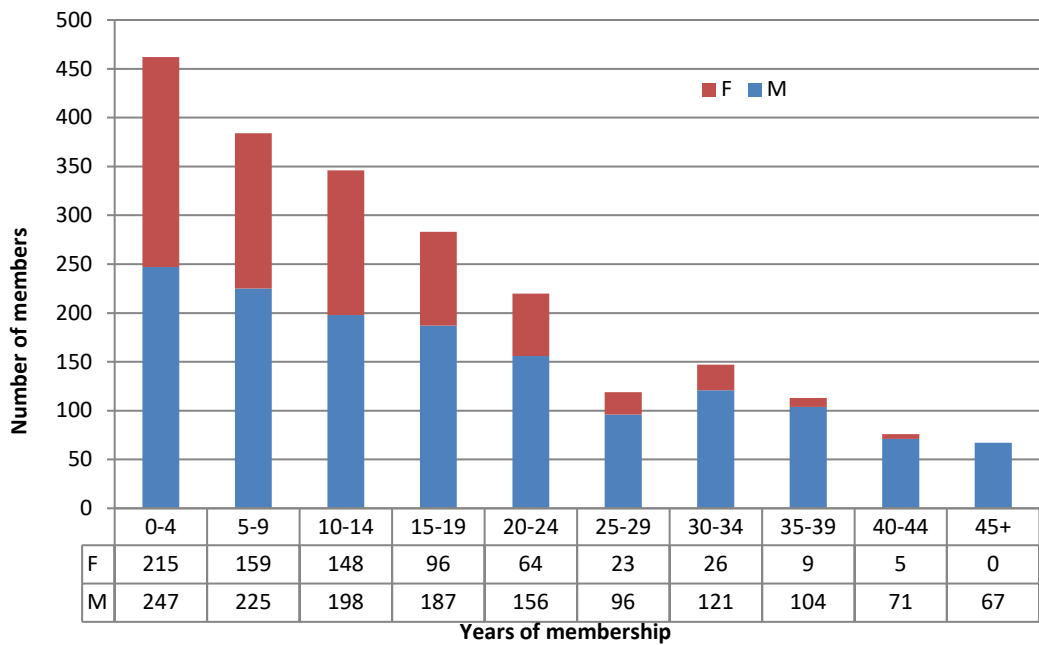
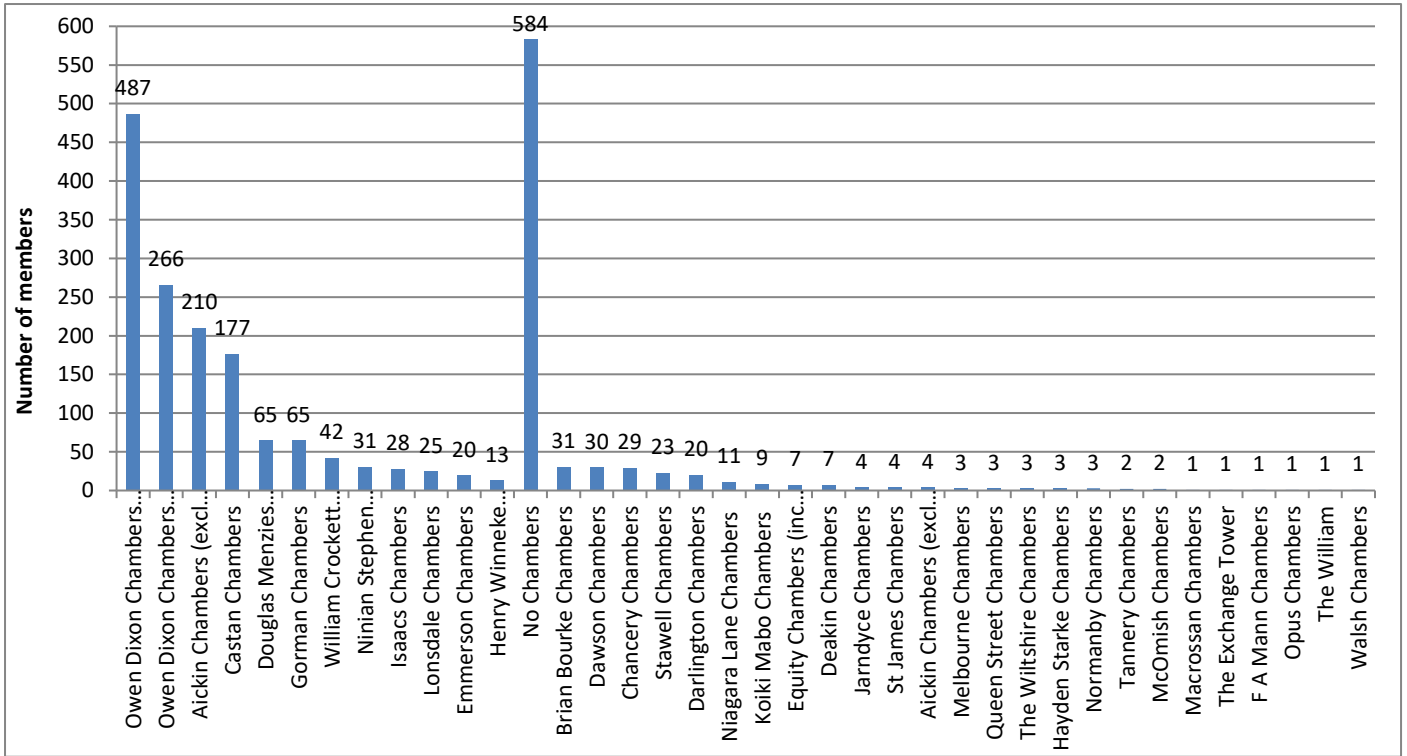


Figure 3-3 Victorian Practising Counsel – by years of membership



4. CHAMBERS

Figure 4-1 Number of Victorian Practising Counsel located in each set of Chambers



BCL Managed Chambers

Independent Chambers

5. CLERKS

Figure 5-1 Number of Victorian Practising Counsel members on each Clerk's list

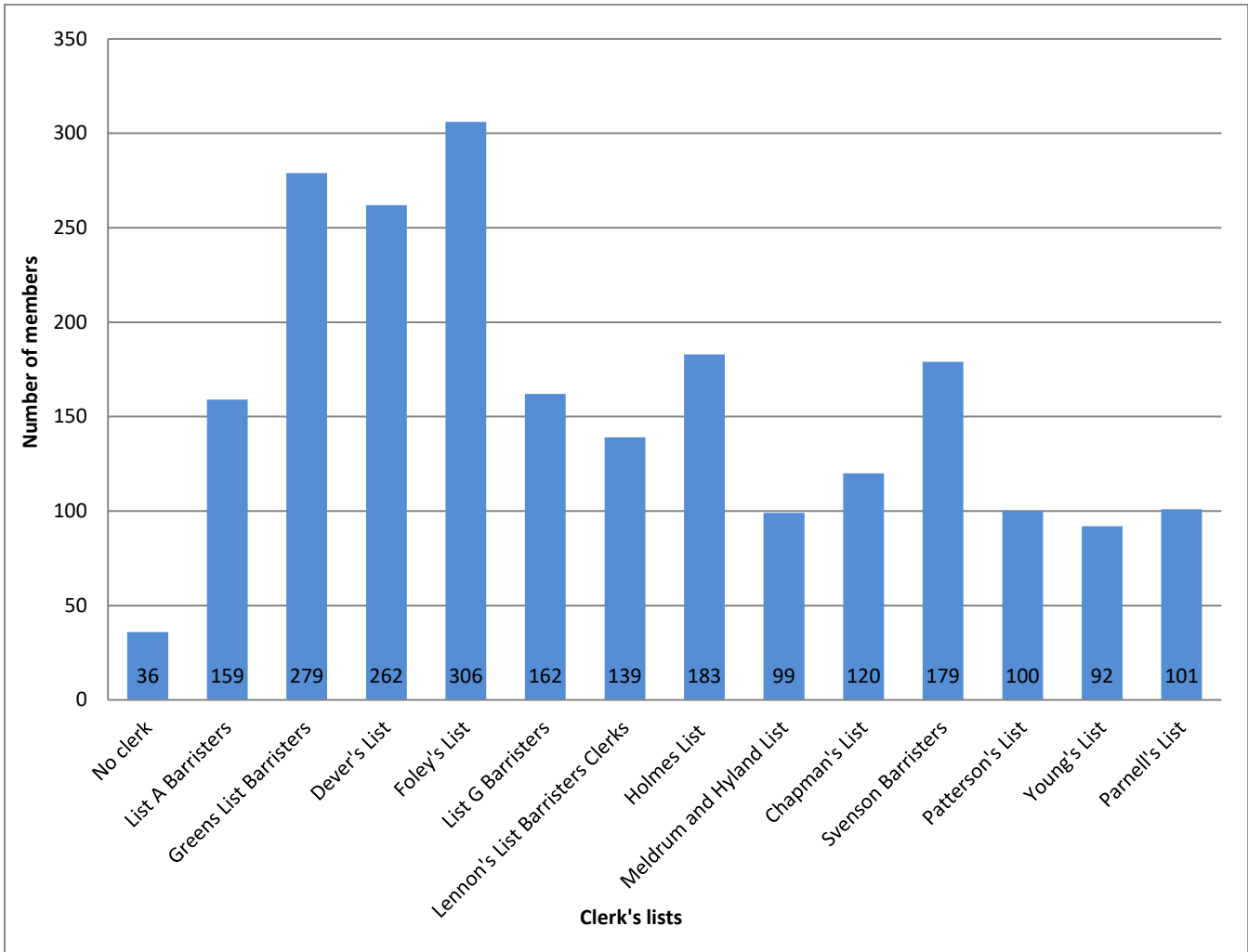


Figure 5-2 Further List information

List name	List	Male	Female	Total	%Male	%Female	Silks	%Silks
No clerk	-	28	8	36	77.8%	22.2%	6	16.7%
List A Barristers	A	106	53	159	66.7%	33.3%	52	32.7%
Greens List Barristers	B	182	97	279	65.2%	34.8%	23	8.2%
Dever's List	D	177	85	262	67.6%	32.4%	54	20.6%
Foley's List	F	191	115	306	62.4%	37.6%	27	8.8%
List G Barristers	G	108	54	162	66.7%	33.3%	34	21.0%
Lennon's List Barristers Clerks	H	101	38	139	72.7%	27.3%	17	12.2%
Holmes List	L	115	68	183	62.8%	37.2%	5	2.7%
Meldrum and Hyland List	M	71	28	99	71.7%	28.3%	2	2.0%
Chapman's List	c	91	29	120	75.8%	24.2%	5	4.2%
Svenson Barristers	S	118	61	179	65.9%	34.1%	10	5.6%
Patterson's List	W	71	29	100	71.0%	29.0%	4	4.0%
Young's List	Y	62	30	92	67.4%	32.6%	14	15.2%
Parnell's List	P	51	50	101	50.5%	49.5%	4	4.0%
	Total	1472	745	2217				

6. MEDIATION ACCREDITATIONS

Table 6-1 Nationally accredited mediators at The Victorian Bar

More information about mediation accreditations can be found on our [website](#).

Mediation Accreditation	Victorian Practising Counsel	%	Other Div's (excl AI,X,Y,Z)
Nationally Accredited Mediator	284	13%	87
Advanced mediator	35	2%	14

7. MEMBERSHIPS

Table 7-1 Members of Bar Associations

Bar Association memberships	Victorian Practising Counsel	%
Children's Court Bar Association	95	4%
Commercial Bar Association	766	35%
Common Law Bar Association	330	15%
Compensation Law Bar Association	138	6%
Criminal Bar Association	509	23%
Family Law Bar Association	231	10%
Industrial Law Bar Association	231	10%
Tax Bar Association	135	6%
Women Barristers' Association	426	19%
Military Bar Association	39	2%
Migration Law Bar Association	107	5%

Table 7-2 Other memberships

Other memberships	Victorian Practising Counsel	%	Other div's
Essoign Club	951	43%	226
Professional Standards Scheme	1463	66%	14

8. BAR ROLL DIVISIONS

Division	Div	Number in division	Are members of Essoign	Percentage
Victorian Practising Counsel	AI	2217	951	43%
Crown Prosecutors and Public Defenders	AII	34	11	32%
Interstate and Overseas Practising Counsel	AIII	99	5	5%
Victorian Practising Counsel without a current practising certificate, temporarily absent from practice	AIV	18	3	17%
Governors	BI	0	0	0%
Judges, Associate Judges and Magistrates	BII	315	88	28%
Ministers of the Crown and Members of Parliament	BIII	3	1	33%
Solicitors-General and Directors of Public Prosecutions	BIV	4	2	50%
Judicial Registrars	BV	44	7	16%
Full-Time Members of Statutory Tribunals	BVI	1	0	0%
Crown Counsel & Parliamentary Counsel	BVII	15	7	47%
Other Official Appointments	BVIII	0	0	0%
Retired Judges and Other Judicial Officers	CI	171	45	26%
Retired Holders of Public Office other than Judicial Office	CII	15	1	7%
Retired Counsel	CIII	362	55	15%
Academics	D	9	1	11%

9. BAR COUNCIL MEMBERS

BAR COUNCIL 2022-2023	
<i>Category A</i>	
Sam D Hay KC	President
Georgina L Schoff KC	Vice-President
Elizabeth A Bennett S.C.	Vice-President
Mark A Robins QC	Honorary Treasurer
Gavin Silbert KC	
Peter A Chadwick KC	
Suzanne B McNicol AM KC	
Colin Mandy S.C.	
Alistair Pound S.C.	
Darryl J Burnett	
Dr Michelle Sharpe	
<i>Category B</i>	
Ashlee Cannon	
Catherine A Boston	Assistant Honorary Treasurer
Nawaar Hassan	
Timothy B Goodwin	
Daniel D Nguyen	
Raini Zambelli	
<i>Category C</i>	
Jessie E Taylor	
Ffyona Livingstone Clark	
Rishi Nathwani	
Andrea Skinner	
<i>Honorary Secretaries</i>	
Owen Wolahan	Honorary Secretary
Benjamin M Gibson	Assistant Honorary Secretary
Elenie G Nikou Madalin	Assistant Honorary Secretary